

Intelligent Guard Tour System

GS-6100CZ is guard tour system with OLED color screen. It is can read EMID 125Khz card with free-drive USB communication port, easy to connect PC to download data. We provide professional software for management. It can be used for Community patrol, Police patrol and many other places.



GS-6100CZ



OLED
color screen



Auto-induction



Waterproof



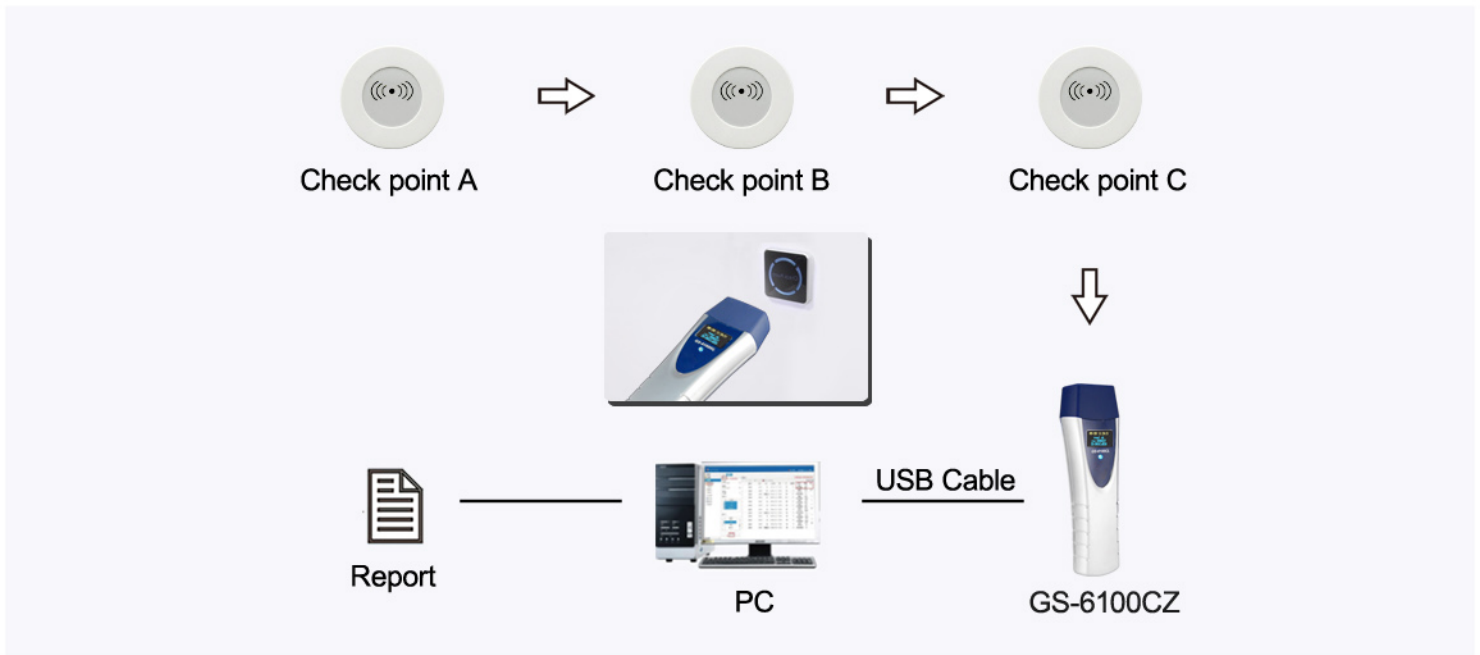
Record



Features

- OLED screen can display current time when power on.
- Automatic induction to read data, no need touch.
- Led light and vibration prompt when reading successfully.
- Low battery alarm function, data full alarm function, Metal luxury case, totally airproof with silica gel, resist low temperature.
- Magnetic contact communication interface.
- Rechargeable li-battery, 5V USB port charger, easy to support long life working.

Topology diagram of system structure



Technical Parameters

Model	GS-6100CZ
Card Type	EMID 125kHz card
Storage Type	Flash memory
Storage Capacity	80,000 records
Shock Records	30,000 records
Reading Distance	0 ~ 3 cm
Prompting Mode	OLED display + Vibrating alert + LED indicator
Communication	USB cable
LED	Yes
Power Supply	3.7V 900 mAh chargeable Lithium Battery
Protection Class	IP65
Operation Temperature	-20°C ~ 70°C
Operation Humidity	10% ~ 95%
Machine Size	145(L)*47(W)*26(H)mm
Weight	190g(Battery included)

Package List



Cover



CD



USB cable



Charger